

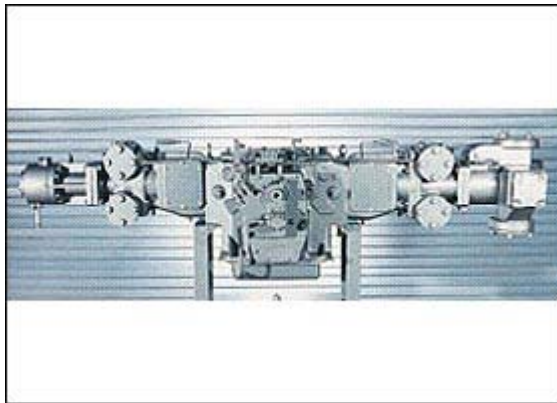


Overview

The GEMINI M Series pack big compressor performance into a small, low horsepower design. Built to run continuously at speeds up to 1800 RPM, these 3.0 inch stroke machines are available in one and two throw models with double acting and or stepped cylinder configurations.

Available in the following models:

- M301 - 1 Throw Frame
- M302 - 2 Throw Frame



Design Info

GEMINI M Series™ FRAME SPECIFICATIONS		
	M 301	M 302
Rated Speed-Max. (RPM)	1800	1800
Max HP/kW	60/44	120/88
Number of Throws	1	2
Max. Number of Stages	2	4
Rod Load - Tension (lb/kg)	6000/2721	6000/2721
Rod Load Compression (lb/kg)	6000/2721	6000/2721
Combined Rod Load (lb/kg)	12,000/5442	12,000/5442
Stroke (in/mm)	3.0/76.2	3.0/76.2
Piston Rod Diameter (in/mm)	1.125/28.5	1.125/28.5
Crankshaft Material	1050 F.S.	1050 F.S.

Connecting Rod Material	F.S.	F.S.
Crankpin & Main Bearing Dia. (in/mm)	3.0/76.2	3.0/76.2
Crankpin & Main Bearings - width (in/mm)	1.38/35.0	1.38/35.0
Main Bearing - Dia. (in/mm)	3.0/76.2	3.0/76.2
Main Bearing - width (in/mm)	1.88/47.7	1.88/47.7
Connecting Rod Pin Bushing - Dia. (in/mm)	1.38/35.0	1.38/35.0
Connecting Rod Pin Bushing - Length (in/mm)	1.25/31.75	1.25/31.75
Unit Length (in/mm)	24/610	24/610
Unit Width (in/mm)	62/1595	78/1981
Unit Weight with cylinders (lb/kg)	1500/680	1870/848
Specifications noted here may vary depending upon unit configuration.		

M SERIES CYLINDER COMBINATIONS					
Operation	Material	Bore (in)	MAWP (psig)	Liner	Cooling
Double Acting	C.I.	2.5, 3.0	1440	No	Air
Double Acting	C.I.	2.5, 3.0	1250	No	Air
Double Acting	C.I.	3.5, 4.0	1250	No	Air
Double Acting	C.I.	4.5, 5.0	1250	No	Air
Double Acting	C.I.	5.5	1000	No	Air
Double Acting	C.I.	6.5, 7.5	500	No	Air
Double Acting	C.I.	8.0, 9.0	300	No	Air
Double Acting	C.I.	10	300	No	Air
SAHE Step	F.S.	1.25, 1.5	6000	Yes	Air
SAHE Step	D.I.	1.25, 1.5	4500	Yes	Air
SACE Step	F.S.	2.5, 3.0	3500	No	Air
SACE Step	D.I.	2.5, 3.0	2500	No	Air
SACE Step	C.I.	2.5, 3.0	1250	No	Air
SAHE Step	C.I.	2.5, 3.0	1250	No	Air
SAHE Step	C.I.	4	1250	No	Air

SACE Step	C.I.	3.5, 4.0	1250	No	Air
SAHE Step	C.I.	5	1250	No	Air
SACE Step	C.I.	5	1250	No	Air
SAHE Step	C.I.	5.5	750	No	Air
SAHE Step	C.I.	6	700	No	Air
SAHE Step	C.I.	6.5	500	No	Air
SAHE Step	C.I.	7.5	500	No	Air
SAHE Step	C.I.	8	300	No	Air
SAHE	C.I.	2.0, 2.5	1250	No	Air
SAHE	C.I.	3.5, 4.0, 4.37	500	Yes	Air
SAHE	C.I.	5.5	250	No	Air
SAHE	C.I.	7	150	No	Air

D.I. = Ductile Iron C.I. = Cast Iron F.S. = Forged Steel.